

# Clifton South

## Area Committee Executive Summary

Unofficial December 2012 Data

# Introduction

- Clifton South Ward is on the southern edge of the city. It contains a mixture of house types but is predominantly 50's council housing. A substantial amount of the houses are now privately owned. There are several parks, woods, allotments and a community garden in the ward, and it is well served for local shops and transport.
- The population of the area (13,922) is predominantly white working class and a mixture of ages in an aging population of residents who came to the Estate when it was first built. There is little local employment and people working in the area tend to work for statutory organisations or in the local shops. Overall there is high unemployment in the area, a higher than average number of people on benefits, and the ward is in the worst 10% nationally in terms of education, skills and training indicators.
- The ward has a number of well-established grass roots organisations representing local people and their views. These run the community groups and two community centres in the ward.
- The main challenges for the ward and its inhabitants are anti-social behaviour, employment & training, parking, Health (including mental health)
- The advent of tram 2 and the widening of A453 will impact on south ward as will the possibility of additional housing at the boundary with Rushcliffe

# Ward priorities – Progress update

Theme	Priority	Key Actions	Outcome	Lead
<b>SAFER</b>	<p>ASB across the estate linked to low level crime (criminal damage etc.)</p> <p>Groups of youths hanging around</p> <p>Increase in Neighbourhood Watch and Neighbourhood Alert</p> <p>Reduce number of Serious Acquisitive Offences (burglary, robbery &amp; auto-crime)</p>	<p>High visibility patrols and intervention With younger groups. Plan being prepared by PC 170 Wallis to target problem youths</p> <p>Raise awareness of services available to younger people</p> <p>Sharing Alerts with local residents. Better use of priority setting meetings to raise awareness</p> <p>Intelligence lead operations, management of offenders, better liaison with the community. Better advertising of success stories to build confidence of the community</p>		Neighbourhood Policing Team
<b>NEIGHBOURHOODS</b>	<p>Parking issues</p> <p>Litter, Bulky waste, fly-tipping</p> <p>Dog fouling</p>	<p>Residents parking scheme now operating in Clifton Village and other areas adjacent to Trent Uni.</p> <p>Ways to resolve parking issues being investigated (particularly in the Glapton Lane vicinity).</p> <p>Evidence gathering and notices being served</p> <p>Education and FPNs tyo culprits. At least 2 x Dog fouling operations held every month</p>	<p>FPN's to dog owners</p>	<p>Highways &amp; Neighbourhood Services</p> <p>CPOs</p> <p>Community Protection 3</p>

Theme	Priority	Key Actions	Outcome	Lead
<b>FAMILIES</b>	<p>Healthy weights in children</p> <p>Need to raise profile of Family &amp; Community Team amongst Citizens and across the area</p>	<p>Delivery rolling programme of weaning sessions and preventive workshops across Clifton North and South for parents and young people</p> <p>Awareness raising events in Clifton Cornerstone</p> <p>To hold 2 open/drop in sessions for the public and partners.</p> <p>To attend and delivery short presentation at TRA's public meetings</p>	<p>50 Parents / young people to have attended weaning and Preventative Workshops</p> <p>Increased uptake of services by Citizens</p>	Children & Families Team
<b>HEALTH</b>	<ol style="list-style-type: none"> <li>1.Smoking Children</li> <li>2.Mental Health</li> <li>3. Physical Activity</li> <li>4. Drinking</li> </ol>	Develop awareness of the harmful effects of the themes and promote supporting services and opportunities	Over 50's Event at Clifton Leisure Centre (Nov)	Decade of better Health
<b>WORKING</b>	<p>Training for local people</p> <p>Jobs for young adults</p> <p>Jobs and training Fairs</p>	Signpost local people to City Employment Hub		Employment Team

# Community Engagement

## Events Delivered

Event	Lead Partners	Date/Time	Venue
Changes to Council Tax benefits - consultation	NCC	19/09/12	Clifton Cornerstone
Older persons Event	NHS Health Promotion	26/11/12	Clifton leisure Centre
Budget Consultation	NCC	03/12/12	Clifton Cornerstone
Christmas in Clifton Event	N Services, Libraries, Family Services	07/12/12	Clifton District Centre

## Future Events and Activities Planned

Event	Lead Partners	Date/Time	Venue
Leader Listens	NCC	29/1/13	Lark Hill Village
Have Your Say & Budget Consultation	NCC	31/1/13	Clifton cornerstone

# Community Engagement

## Ward Walks

Area/Estate	Date/Time	Meeting Point
Green Lane NAT	29/1/13 4pm	Lark Hill Village
Fairham NAT	26/03/13 – 10.30	Breckswood Park

## Community Meetings

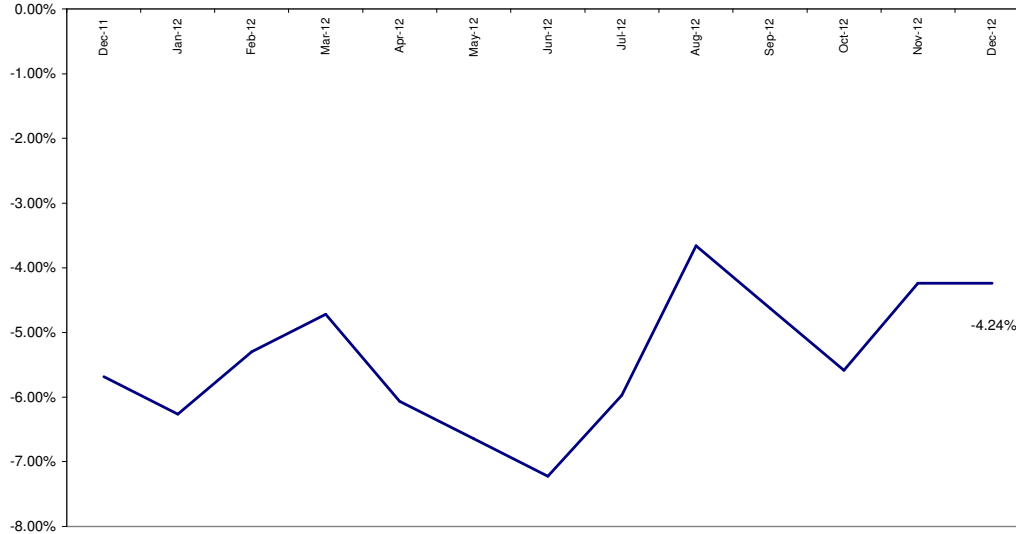
Group	Date	Venue

# Finance

- **Ward Councillor Budgets** (as at 18/01/13)  
Total amount allocated this period £1,200  
Budget remaining unallocated £12,391 (inc. of 2012-2013 allocation)
- **Area Capital Fund**  
Total amount allocated this period £30,374  
Budget remaining unallocated £ 3,418 (inc. of 2011-2013 allocation)
- **Others – Section 106, NCH Environmentals, Other Funding**  
None this period

# Crime

All Crime in Clifton South -  
% Change over 2010/11 Baseline (Rolling 12 Month)



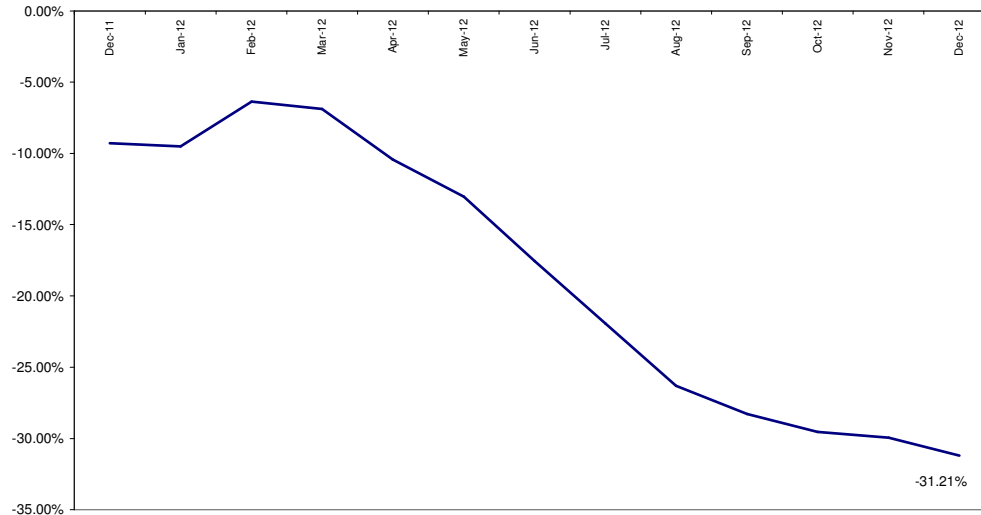
\*Refers to December 2012 compared to December 2011

- In December 2012 (compared to December 2011) All Crime in Clifton South was at the same level (77 crimes, see above RAG rating).
- The above graph compares volume of All Crime over the previous 12 months to a 2010/11 baseline. Whilst crime continues to be down against this baseline, performance has varied considerably since December 2011.
- Year to date (compared to the corresponding period last year) All Crime is up by 0.67%.



# All ASB

All ASB in Clifton South -  
% Change over 2010/11 Baseline (Rolling 12 Month)



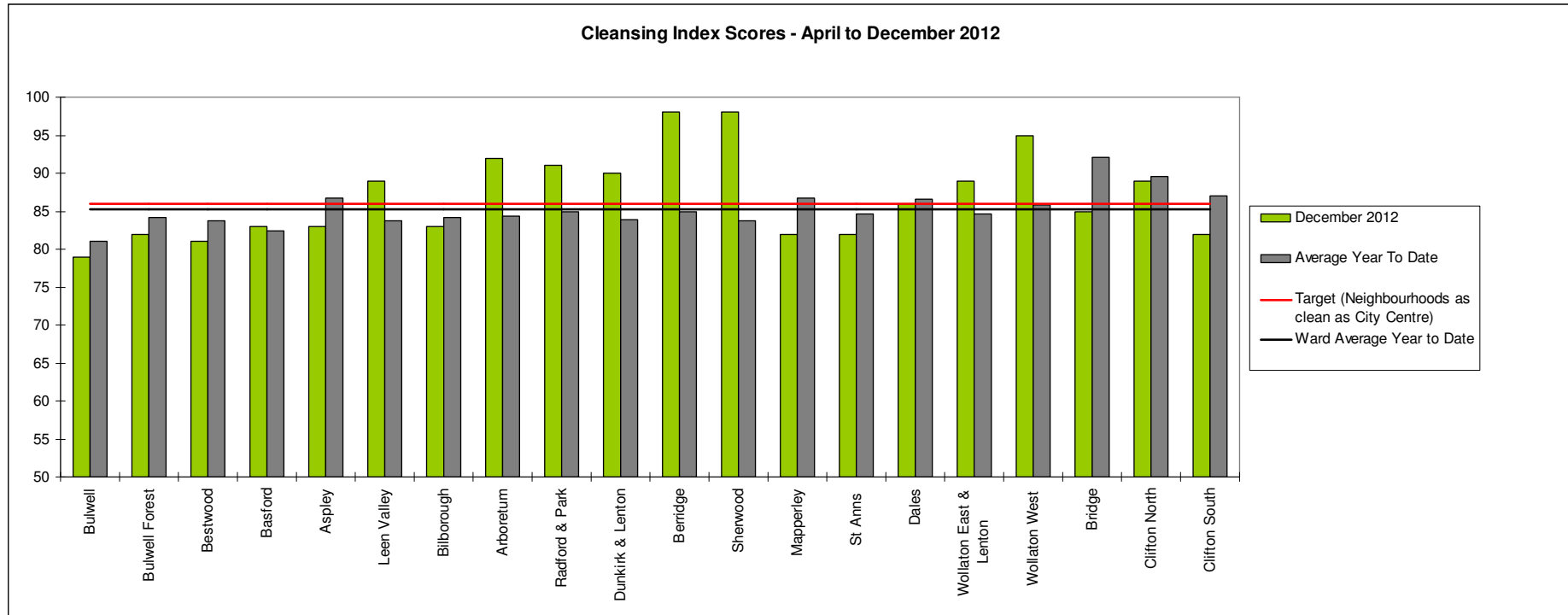
Red		
Amber		
Green*	12 fewer calls	-23.08%

\*Refers to December 2012 compared to December 2011

- In December 2012 (compared to December 2011) All ASB in Clifton South is down by 23.08% (12 calls, see above right RAG rating).
- The above graph compares volume of All ASB over the previous 12 months to a 2010/11 baseline. On this measure the performance of Clifton South continues to improve. However the gradient is now less steep than it was between March and August, indicating that improvements are less significant.
- Year to date (compared to the corresponding period last year) All ASB is down by 33.72%.

# Cleanliness Index

This graph shows the position of your ward compared to other Wards



**The “neighbourhood as clean as the city centre” benchmark target on cleanliness is to achieve a score of 86% in every ward. The 86% target is shown in red in the above graph.**

To calculate the Cleanliness Index (CI) an agreed number of transects are surveyed across an area covering a range of land types. Each site surveyed is awarded a cleanliness grade based on a 7 point scale from A to D where Grade A: – no litter, and Grade D: - heavily littered. The maximum possible score of 100 is achieved when all sites achieve Grade A.

The Code of Practice for Litter and Refuse (COPLAR) requires councils to strive to reach an ‘acceptable’ standard of cleanliness (grade B or better) across the Council area. Grade A is the ultimate goal and is how a site should be immediately after sweeping but is almost impossible to maintain for any length of time. For example, a grade A site is completely free of litter – one cigarette butt takes it down to B+.

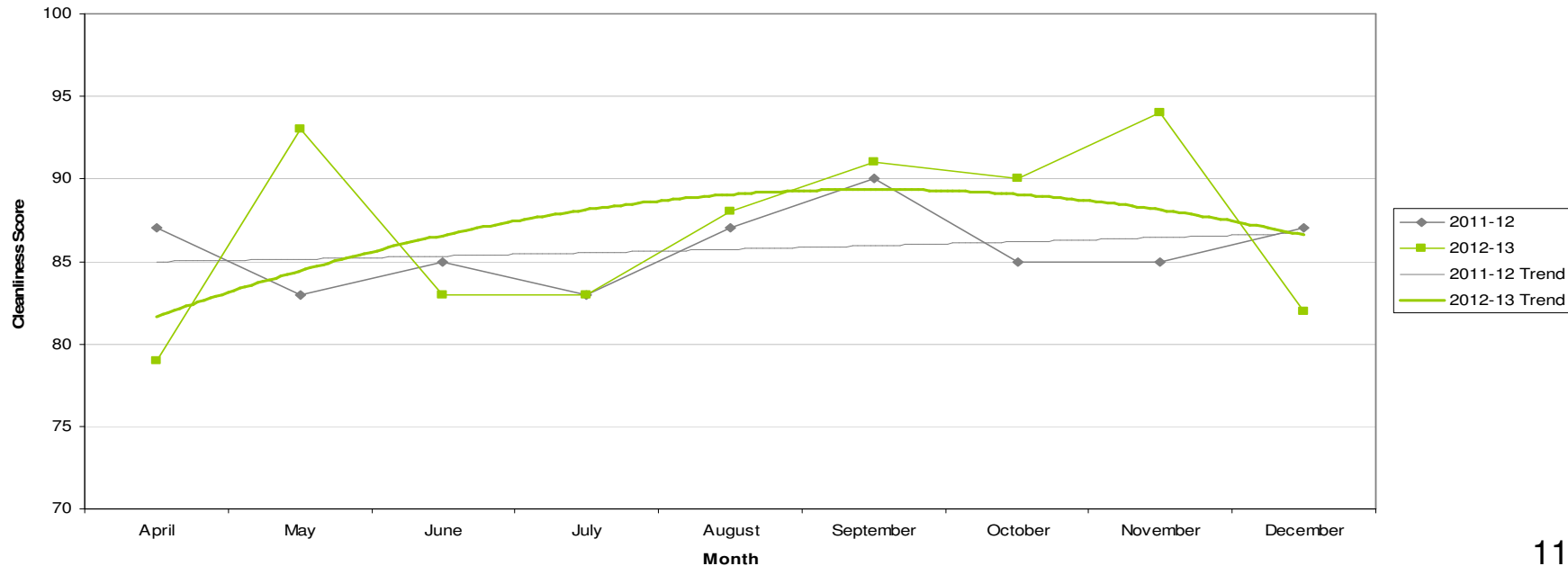
To achieve the manifesto commitment of Neighbourhoods as clean as the City Centre a target of 86 is required as that was the CI for the City Centre in May 2011. To give some context if all areas surveyed achieved a grade ‘B’ standard, this would equate to a cleanliness index of 67.

# Cleanliness Index

Cleanliness Index Score	<b>82</b>
Performance compared to previous year	↘
Performance compared to neighbourhoods target of 86	↘

- All data refers to a comparison with the previous year's month
- It is proposed that performance over time graphs be used for each indicator
- Historic data for comparison is not available for dog fouling

Cleanliness Index

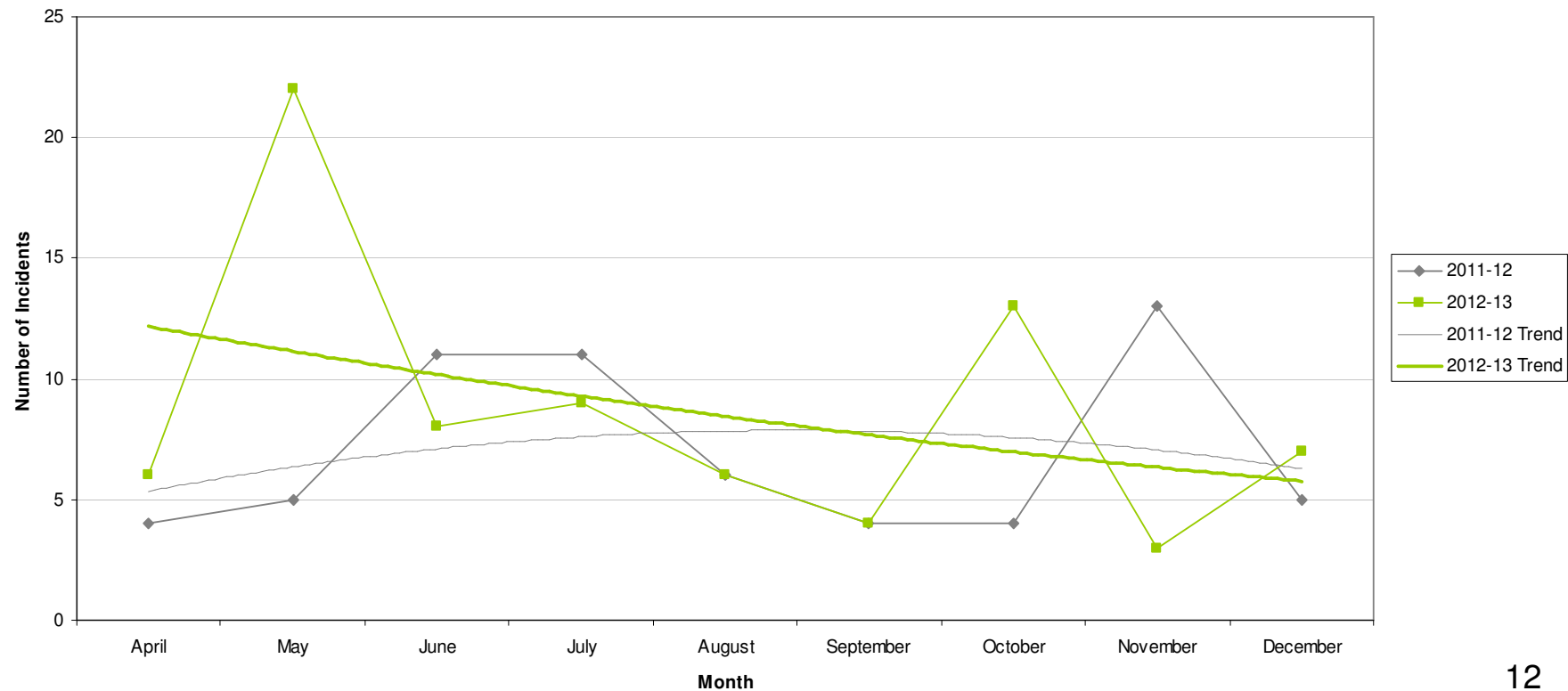


# Graffiti Reports

<b>RED</b>	<b>7 incidents</b>	<b>Increase of 2</b>
<b>AMBER</b>		
<b>GREEN</b>		

- All data refers to a comparison with the previous year's month
- It is proposed that performance over time graphs be used for each indicator
- Historic data for comparison is not available for dog fouling

Incidents of Graffiti

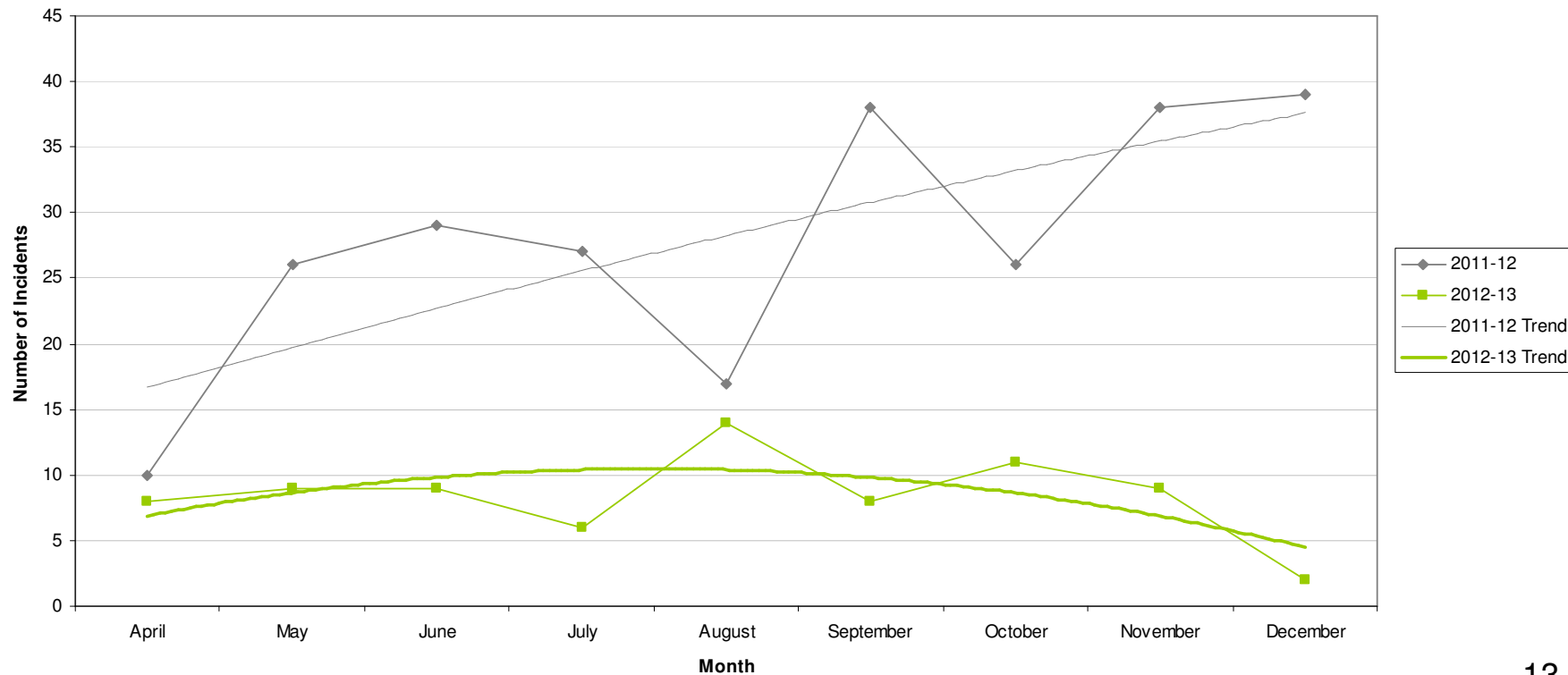


# Fly Tipping

<b>RED</b>		
<b>AMBER</b>		
<b>GREEN</b>	<b>2 incidents</b>	<b>Decrease of 37</b>

- All data refers to a comparison with the previous year's month
- It is proposed that performance over time graphs be used for each indicator
- Historic data for comparison is not available for dog fouling

Incidents of Fly Tipping



# Unemployment Rate

Area	Nov-12			Change in last		Change in last year	
	Number	Rate	City Rank	Number	%	Number	%
Berridge	1,030	7.1	7	-11	-1.1	67	7
Dunkirk and Lenton	253	2.3	19	-7	-2.7	-20	-7.3
Radford and Park	754	4	17	-14	-1.8	-13	-1.7
Sherwood	544	5.1	13	2	0.4	-66	-10.8
Wollaton East and Lenton Abbey	143	1.4	20	4	2.9	5	3.6
Wollaton West	248	2.7	18	-6	-2.4	10	4.2
Aspley	1,174	10.4	1	34	3	-13	-1.1
Basford	728	6.5	10	21	3	36	5.2
Bestwood	1,009	8.9	3	22	2.2	19	1.9
Bilborough	750	7.2	6	5	0.7	-25	-3.2
Bulwell	1,061	9.7	2	44	4.3	34	3.3
Bulwell Forest	410	4.5	15	-19	-4.4	-45	-9.9
Leen Valley	335	4.8	14	-18	-5.1	-11	-3.2
Bridge	696	6.6	9	-11	-1.6	-24	-3.3
Clifton North	378	4.3	16	-9	-2.3	-23	-5.7
Clifton South	524	6	12	17	3.4	11	2.1
Dales	863	7.4	5	-1	-0.1	22	2.6
Mapperley	703	6.3	11	1	0.1	-3	-0.4
St Ann's	1,195	8.7	4	-39	-3.2	8	0.7

*This is an edited version of a report produced by: Geoff Oxendale, Information and Research Officer, Nottingham City Council*

# Housing

## Clifton South Ward - Housing



### Anti-social behaviour - Clifton (Clifton South Ward)

Indicator	Current Target	2010/11	2011/12	2012/13		
		Value	Value	Value	Status	Trend
% of ASB cases resolved - Clifton	97.6%	97.68%	96.98%	99.25%		
% of ASB cases resolved by first intervention - Clifton	75%	-	-	78.95%		n/a

### Empty properties - Clifton South Ward

Indicator	Current Target	2010/11	2011/12	2012/13		
		Value	Value	Value	Status	Trend
Average void relet time for Clifton South Ward	26	45.53	21.21	34.65		
Lettable voids Clifton South Ward	-	15	15	16		
Empty properties awaiting decommission in Clifton South Ward	-	0	0	0		

### Estate star ratings (from Tenant Service Inspectors)



Indicator	2010/11		2011/12		2012/13		
	Value	Status	Value	Status	Value	Status	Trend
Estate star rating - Nobel Road	3 Star		3 Star		3 Star		

Data prepared by Nottingham City Homes Performance Team







For more information please contact Tricia Quinn, Performance Review Manager on 0115 9157365 or Marcus Parton, Performance Review Officer 0115 915715

# Housing

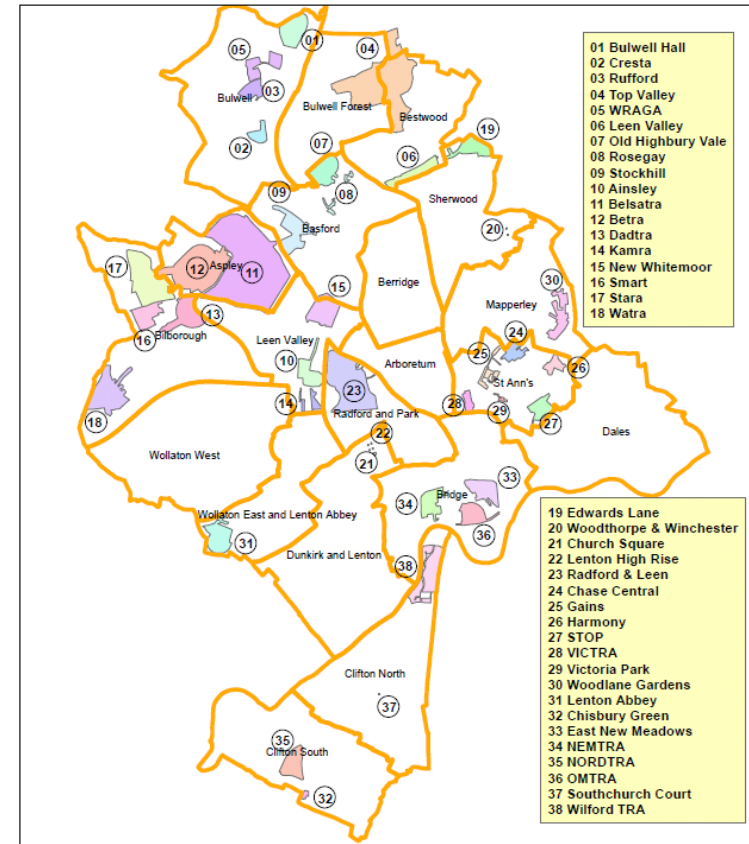
## Rent Collection - Clifton

Indicator	Current Target	2010/11	2011/12	2012/13		
		Value	Value	Value	Status	Trend
Rent charged that has been collected - Clifton office area	100.2%	100.9%	101.4%	99.5%		

### Key:

-  Performance on or exceeding target
-  Performance below target
-  Data only performance indicator
-  Performance has improved compared to two years ago
-  Performance has deteriorated compared to two years ago
-  Performance unchanged

**Map of Tenants and Residents Associations by Ward**



Data prepared by Nottingham City Homes Performance Team

For more information please contact Tricia Quinn, Performance Review Manager on 0115 9157365 or Marcus Parton, Performance Review Officer 0115 915715



# Community Protection

In December 2012 there were no court outcomes in Clifton South.

*Data has been received from Community Protection and where postcodes have been listed these have been geo-coded and mapped to determine the Ward. All addresses relate to the address of the Perpetrator.*

*FPNs are not currently available at ward level.*

# Fire

Table: Fire Rate (per 1000 of population) by ward (previous 12 months)

Ward	All Fire		Property		Secondary		Rank
	Volume	Rate	Volume	Rate	Volume	Rate	
Arboretum	14	1.21	5	0.43	9	0.77	13
Aspley	68	3.90	13	0.75	55	3.16	2
Basford	62	3.84	12	0.74	50	3.10	3
Berridge	44	2.23	19	0.96	25	1.27	10
Bestwood	44	2.58	13	0.76	31	1.82	7
Bilborough	46	2.75	13	0.78	33	1.97	6
Bridge	37	3.63	6	0.59	31	3.04	4
Bulwell	91	5.51	25	1.51	66	4.00	1
Bulwell Forest	43	3.13	12	0.87	31	2.26	5
Clifton North	15	1.15	4	0.31	11	0.84	16
Clifton South	19	1.36	6	0.43	13	0.93	12
Dales	19	1.18	10	0.62	9	0.56	15
Dunkirk and Lenton	11	0.91	5	0.41	6	0.50	18
Leen Valley	25	2.30	3	0.28	22	2.02	9
Mapperley	16	1.06	8	0.53	8	0.53	17
Radford and Park	30	1.48	11	0.54	19	0.94	11
Sherwood	18	1.19	3	0.20	15	1.00	14
St. Ann's	31	2.40	9	0.70	22	1.70	8
Wollaton East and Lenton Abbey	8	0.69	1	0.09	7	0.61	19
Wollaton West	5	0.34	0	0.00	5	0.34	20
<b>Average Rate (of 20 Wards)</b>	<b>2.14</b>		<b>0.57</b>		<b>1.57</b>		

Key:  
 Highest  
 Second Highest  
 Third Highest

Clifton South ranks 12<sup>th</sup> highest out of the 20 wards for rate (per 1000 of population) of all intentional fire.

NB: Wards are ranked from 1 – 20 where 1 is the highest Rate and 20 is the lowest Rate.

# Methodology

Data has not been audited or verified and therefore must only be used as a reflection of crime.

Where Crime and ASB is broken down to Ward level this data has been mapped, and using a polygon created for the *Council boundary* of the 'City Centre' this data has been removed where it has impacted on the Wards that crossed into it. Where figures for Rate of the population have been referred to, this has been taken into account for these calculations.

Where possible the most recent data is used, although for some areas this may be a month further in arrears.

Discussions continue with other agencies regarding what further data can be included.